

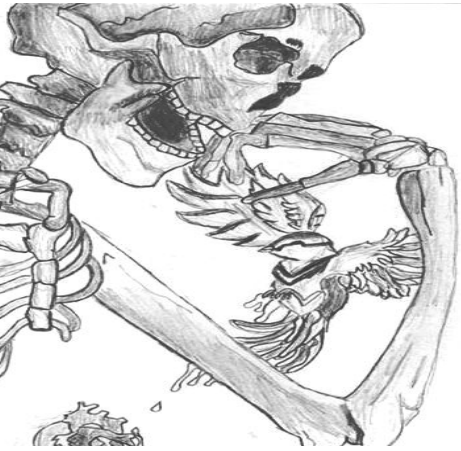


Process Portfolio

This process portfolio includes the progression of my paintings and myself as an artist. By creating this process portfolio I will display the different directions I took with each piece. This allowed for the creation of well developed work as I experimented with a wide range of mediums, techniques, and artists. Not only did I create different art pieces but I learned to appreciate the intention of artists that allowed for more effective interpretations of my own art. As an artist I previously thought art was about improving skills and creating beautiful pieces, now I understand that art is about sharing concepts or issues we witness or feel the need to be visually expressed. I developed technical skills through the use of unfamiliar mediums and incorporated in depth intentions through the use of many artists as inspiration. My process portfolio includes paintings, drawings, sculptures, and digital images. By working with a variety of mediums I was able to enhance my skills from photoshop to the use of acrylic paint. Within this process portfolio I created and reflected upon multiple pieces that were successful such as, "Smile", "Day Dreaming" and "Comfort" which I will work towards making a continuation/series to create a larger impact and continue the growth of great artistic technique. Also, with the creation of each piece I intended to communicate the central idea of existentialism, working to display the absurdity within life. These pieces in reality also focus on experiences I have had in life both positive and negative, in all showcasing a part of who I am.

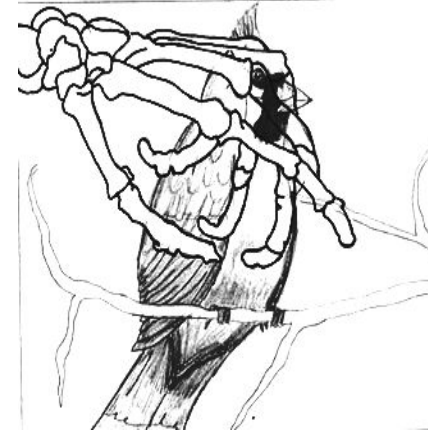
Inspiration & Development of Initial Ideas

For my drypoint piece I began to think of ideas and artistic inspirations. Existentialism is the main idea behind this piece, particularly focusing on the theme of life and death. Life and death are things that are commonly thought about throughout the majority of people's lives. Death is something that we usually disassociate ourselves with due to the suffering that comes along with it. When thinking of an artistic inspiration I wished to choose a piece that displayed a in depth reflection of life and death. While thinking of my theme I looked into the work of Auguste Rodin and his piece "*The Thinker*". This piece visually portrayed my intentions of symbolising a persons reflection upon the significance of life and death.



"The Thinker" (1902)¹
by Auguste Rodin
Bronze Sculpture
H. 198cm W. 98c.; D. 140cm

Besides being inspired by the pose of "The Thinker", I intended to incorporate the interpretation of the piece. "The Thinker" was used to represent a person with a torn body and a damned soul. The aspect that distinguishes this piece is the pose "The Thinker" holds intended to represent a concentrated reflection. "The Thinker" has a hunched over pose leaning over his hand, creating an emphasis on what it looks like to be critically reflecting or observing something. With my piece I desired to not only create a theme of life and death but also display the suffering thoughts that follow. This is something Rodin's piece strongly suggested throughout the body language of "The Thinker". The following sketches incorporate these ideas through the symbolic use of the skeletons and animals representing life and death. Although the following sketches portrayed my above intentions, I preferred the sketch on the far left because of its clear resemblance to "The Thinker".



¹"FRAME|WORK: The Thinker by Auguste Rodin." FAMSF, 19 Aug. 2011, www.famsf.org/blog/framework-thinker-rodin.

Process and Development

After completing my sketches I decided to choose the below sketch that clearly resembled my inspiration based on both looks and interpretation. I began I detailed sketch that displayed great blending techniques, resulting in the best creation of form and value. Since I am used to working with pencil this technique was the least challenging. Afterwards I transferred my sketch onto the plexiglass by inscribing the glass with a blade. This technique was challenging due to the restricted movement of the blade and the ability to see the marks I was making on the plexiglass. I then began to inscribe my design, in order to add value and form I inscribed deeper into the plastic to get a dark shade and lightly to create small shadows. Also, every now and then I would take my plate off the paper and bring it up to the light to make sure I was inscribing all of my lines. Although this technique was challenging, I was able to expand my skill of working across other mediums, which overall created a decent piece with a good attempt of creating form. After completing my image on the plexiglass. Once I felt satisfied with my piece I prepared my tools in order to print it. The printing process became very time consuming and dirty because of the ink spreading all over the place.

I was able to deduce the amount of ink I would need and placed a very small amount on my plate. Then I spread the ink all over the my design and with small pieces of newsprint paper I began to remove the ink. Done by getting a small clean piece of paper and smudging it over my design until the ink was removing.

Sketch



Placing Ink on Plexiglass



Making the Print



I repeated this process multiple times until my design was starting to appear. Once I removed all the ink and the design was distinguishable I place my plate and my color paper on the roller and it resulted in a successful print.

Tools Used



- Ink (Oil based)
- Plexiglass
- Blade
- Newspaper
- Print Paper

The above image displays all the materials i used to create the printing process. Before creating my piece I used a blade to inscribe my design on the plexiglass. Then I used oil based ink to cover the design/plexiglass. After the whole glass was covered I used pieces of newspaper to distribute the ink evenly into the scratches; done to create the best visibility of lines in the print. Afterwards I removed the ink with pieces of newspaper. Once the ink was removed to the best of my ability I placed my design on a blank piece of paper. I then carefully removed the paper that displayed my final print.

Reflecting Upon Use of Medium

The use of ink to create this drypoint was very new to me. Although this was the first time I worked with this medium the results were successful. When inscribing my sketch on the plexiglass I found the process difficult. I could not tell whether or not I was creating form throughout the piece. Also, I could not fix my mistakes because once I made a scratch it would be visible in the print. I was not optimistic about the final print being successful because it was difficult to tell what my design was beginning to look like. When I began to place and remove the ink from the plexiglass it was a messy process. It was challenging to keep the ink from not going all over the place. After removing the ink and creating my final print I realized the whole process was definitely worth the challenge. I created a successful print that had both form and value. When inscribing my design I considered using the stippling technique but reflecting upon my piece I realize that that would have been inconvenient, as the ink would have been harder to stick to the plexiglass and easily distribute.



Brainstorming & Development of Initial Intentions

For my ephemeral piece I wanted to use materials that would be easily manipulated. Ephemeral art is meant to be enjoyed for a short time, therefore I wanted to place my piece somewhere in which it would be easily destroyed. I intended to make this piece with either found objects from nature or found objects placed within nature. Overall, my plan was to manipulate found objects and create an emphasize on color. Color is an element that I wanted to emphasize because this piece is meant to represent the different emotions within everyone, and color is easily associated with expressing emotions.



The final step to ephemeral art is letting the piece be destroyed, acknowledging that its form is not long lasting. This was done over a period of time not to be categorized as ephemeral art, but to highlight the idea that our emotions are never in place, a certain force interferes with our emotions, scrambling an inner peace people often desire.



The following sketches were done as a base or blueprint for my piece. These were the designs that came up, while I thought about how to represent calmness and peace through color and objects. They were also done with oil pastels and watercolor, in order to add a vibrant color and experiment with movement. Overall these are well developed sketches which would allow for a base of my piece that would then be manipulated through the use of natural found objects.

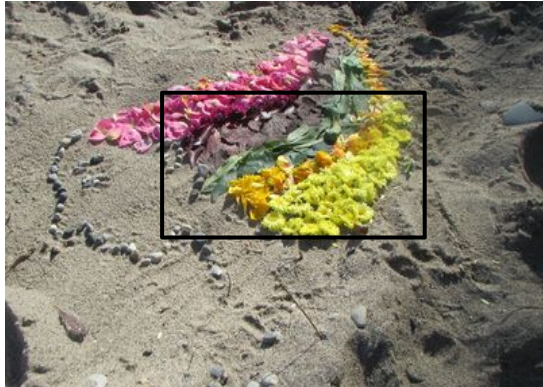


Experimentation and Manipulation of Techniques

Experimenting with objects that are easily decomposed and in places that would possibly obstruct the piece.



While creating my ephemeral piece I began to experiment with the location of the piece. At first I wanted by piece to be made with natural objects in a natural environment. The piece to the left shows my first attempt at creating this piece, done in the sidewalk of a local park. I did not feel this artwork satisfying because of its small size and simplicity. Afterwards I decided to attempt to recreate this work piece at a larger scale in the sand at the beach with the same materials. Although this piece was larger, I did not like the simplicity behind it and the attention it attracted from the public.



When this piece was finished people, walked around it unwilling to destroy or interfere with it which was not my intention. Conversely, I wanted people to accidentally walk over it and let it be destroyed by its own environment. Since the public/natural location of this piece was not successful, I decided to create this work somewhere where I knew it would find multiple interferences; my house. I created my piece in a black construction paper and placed it in my living room floor. For a while it remained in place, but after a few hours it was moved around and walked over. Eventually it was placed in my room, at that point it was no longer recognizable and the design was completely destroyed. That was exactly what I intended with my work as it worked to stir all sorts of emotions and some kind of frustration or destruction of inner peace. This piece also used a range of materials such as flowers, plants, leaves, and beans. It was difficult to manipulate some of the materials to create movement or line, as seen with the picture at the beach in which I attempted to create a face with rocks but failed to create sharp lines. Overall, by creating my piece in a flat surface I was able to easily create a desired movement of the flowers and leaves and sharp lines, concluding a successful image.

Application of Techniques and Medium



For my self-portrait I decided to take a different approach to the application of acrylic on canvas. Since acrylic paint dries quickly I had to work at a quick pace in order to get the smoothest texture and the best blending. Unlike my other paintings, I began this piece by painting darker tones first. Once I applied the dark tones I then applied the light tones all around while simultaneously blending into the darker tones and adding water to eliminate the visibility of rough brushstrokes. This technique was quite effective as it created a nice contrast in color and added to a more realistic creation of form. Although this technique was helpful in creating a more realistic piece there were some setbacks in the process. I noticed that it became difficult to blend the longer I took to apply the paint carefully. This pushed me towards relying a lot on the addition of water to create a smoother blending which resulted in the loss of color.



This is easily noticed when looking closely at the face. The face involved the use of a light cream color which as water was added, the loss of color became obvious. The addition of water to enhance a smooth blending was most successful when using darker colors. While looking at the jacket and shirt, the blending suggests a better creation of form and a smooth transition in color.



Investigation & Communicating Intentions



"Garçon a la Pipe" (1905)²

by Pablo Picasso

Oil on Canvas

99.06cm x 81.28 cm



²"Garçon a la Pipe." *Garçon a la Pipe*
Pablo Picasso Painting.

www.pablopicasso.net/garcon-a-la-pipe/.

The inspiration for my work was Pablo Picasso's Rose Period. Picasso's Rose Period was a time when his work involved the use of warmer colors such as: red, orange, yellow, and shades of pink. During this period his work created the feeling of happiness, love, and beauty. While examining his work during his Rose Period the piece that particularly caught my attention as inspiration for my work was "Garçon a la Pipe"(Boy with Pipe). I liked the addition of warm and vibrant colors and the great amount of flowers added to the piece. Although this piece appears to have a joyful mood, I noticed how the boy in the painting had a sort of expressionless face. Also by the way the boy is dressed in Picasso's piece the use of flowers appears to be random and abruptly placed as an expression of love or joy. I wanted to incorporate similar warm colors as a way to suggest a joyful emotion felt during the creation of the piece. Also, through the random placement of flowers, I will similarly convey a sense of happiness, which is what I felt during the creation of this piece.

Since my work was inspired by Picasso's Rose Period it conveys similar warm colors. Red is the primary color I used and manipulated throughout my piece to create orange and yellow. "Garçon a la Pipe" is a painting that also displays some of the smoothest blending techniques. While observing the piece it is evident that a lot of paint was added and blended from dark to light tones. I attempted to apply a similar blending technique that would allow for a smooth transition of color and create a realistic piece. That was difficult at times to do with acrylic paint which dries at a quick pace, creating some of the rough brushstrokes in my painting; unlike Picasso's piece which may have been easier to blend due to the use of oil paint. Comparing my painting to Picasso's as seen to the right, displays a great difference in the shade of color. My painting was brighter in color, which may have been because the color of Picasso's piece began to fade over time. Overall, my intention was to display a random joyful moment through the use of warm and comforting colors, inspired by Picasso's feelings while painting "Garçon a la Pipe".

Self Portrait

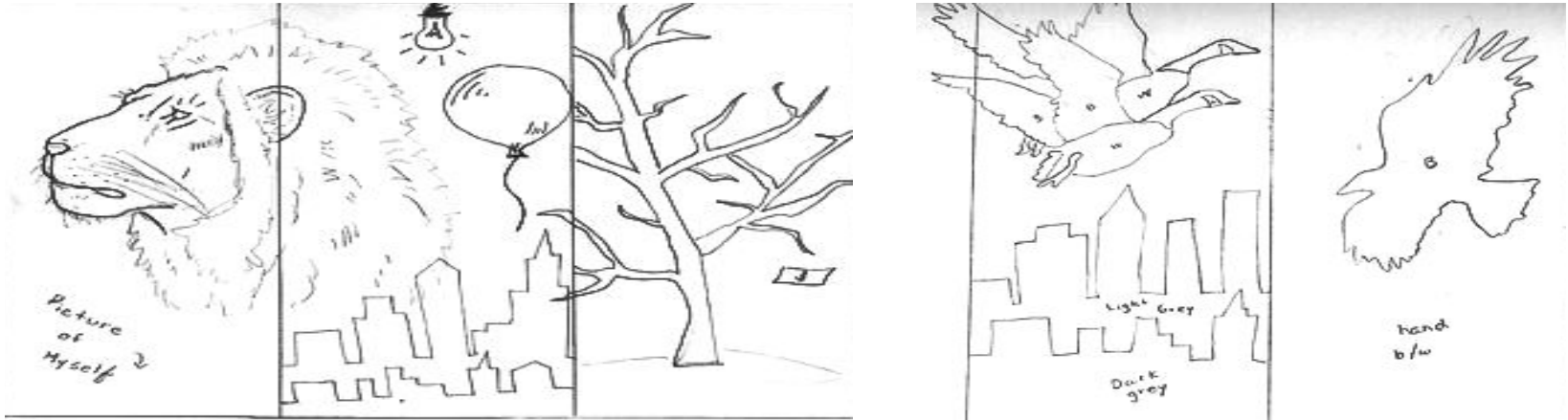


Picasso's Work



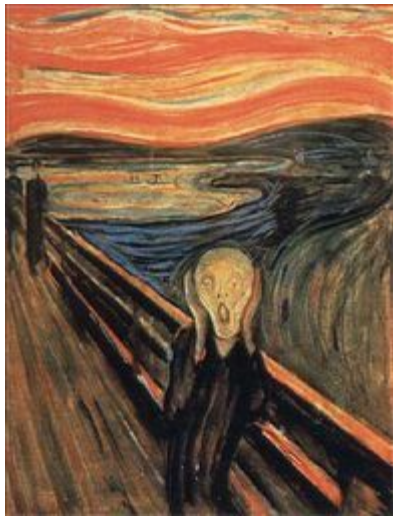
Communication of Ideas & Intentions

My triptyc painting will work towards telling three stories; a reflection upon myself, reflection upon how I affect the community I live in, and a reflection upon how the community I live in affects me. In other words my triptyc will explain the role I play within my city and the way I view my city. The sketches below worked as a planning stage to inspire the options I had with this piece. Although this piece would require three separate canvases to tell three individual stories, I also had to consider a way to connect all three canvases. This would work to communicate that although each work as individual stories the overall idea is to reflect upon my community.



While planning some sketches of what each canvas would hold I found myself using animals a lot. The reason for the use of animals is because they often hold their own well known symbolism. A lion can symbolize courage and power and a dove can represent peace and comfort. As I began to develop some detailed sketches I noticed that I was drawing a lot of birds. I am usually drawn to including birds in some of my artworks because they hold a unique meaning to them. Geese are associated with migration and movement and crows are associated with bad luck and death. Since birds have well known associations to them it became easy to include them to symbolize the concepts of bad luck, peace, and direction. These are all ideas I wanted to include in my painting, in which the audience would be more likely to draw similar interpretations. By looking into the significance of animals and their associations I was able to further the interpretation of my work, as the common symbolism behind the animals I included help guide the audience to better analyze my work.

Seeking Inspiration and Developing Ideas



"The Scream" (1893)
by Edvard Munch
Oil & Pastels on Board
91 cm x 73.5 cm

³"Edvard Munch | The Scream(1893)|Artsy." *Artsy* - Discover, Research, and Collect the World's Best Art Online, www.artsy.net/artwork/edvard-munch-the-scream.



The artwork that inspired my triptyc was "The Scream" by Edvard Munch. His piece brought attention to expressing feelings an inner thoughts rather than purely focusing on technical skill. His work was a breakthrough for Expressionist art, serving as inspiration for new artists at the time. "The Scream" was painted from a personal experience the artist had, suggesting that extreme events can destroy human decency.³ It is seen through his piece that nature is manipulated by color and texture, communicating the our scrambled sense when experiencing morbid events. Munch's piece could be expressing the force of agony in humans, by depersonalizing the figure in his piece. The figure in his painting shares little human resemblance which allows for the audience to understand the power of tragic events on a person. There are multiple things from "The Scream" that inspired my work, like including nature. Although, the use of nature is quite different in each piece, nature is usually used to represent a connection to the artist or an experience. Similarly I dehumanized my painting as seen in my hands. This was done in order to represent the a sense of morbid tragedy that occurs in life. Overall, the connection to my inspirations work is somewhat similar. They share similarities in purpose and intention but lack resemblance of formal qualities. Munch used thin lines to create movement throughout the piece and manipulate the use of nature as seen below, while I used less detail and focused on the manipulation of human qualities as a the main inspiration.



Artist Inspiration & Brainstorming Themes



“Earth and Sky”

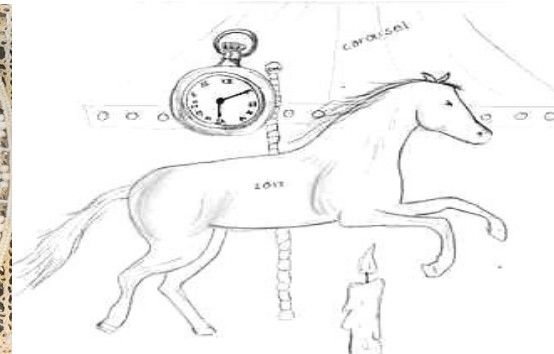
by Joseph Cornell
Found Objects

“Solomon, Deborah. *Utopia Parkway: the life and work of Joseph Cornell*. New York: Other Press, 2015. Print

For this piece I plan to display a collection of memories and the development of my childhood. While thinking about how to display memories I thought it would be most effective to use found objects that share personal experiences and memories. It would be easier to arrange these objects in a box, therefore they would appear to be connected. When thinking of displaying my objects in a box I thought of Joseph Cornell's shadow boxes; particularly “Earth and Sky”.⁴ As I observed Cornell's piece I noticed that his boxes have a sense of unity because of the color scheme he uses and the one box that is separated into sections. Certain sections are not crowded, usually containing only two or three large objects. The following sketches have some ideas of certain objects or concepts I could include in my shadow box such as time and childhood objects/toys that sparked memories.

It became interesting to see which objects Cornell used in his shadow box. He usually used old photographs and found elements that had a great significance, usually bought from a place he had traveled. His work similarly worked towards addressing childhood, space, or memories. Most of his work is referred to as memory boxes because each item is associated with an event or an important memory. The attachment of objects is common especially within myself, I liked the idea of making every object include a personal memory because often those memories are mysterious pieces to the audience and hold hidden memories.

Private meaning is important to the creation of a shadow box because the significance lies heavily on the artist rather than the audience. I will include this personal connection by providing personal photographs that hold positive experiences.





Like Joseph Cornell's work I expressed creativity and by placing a variety of different objects within my box. Displaying my own shadow box was more difficult than anticipated but the outcome was completely worth it. I had taken too much thought in this piece and was not sure if I would be able to display memories that looked well connected. Although the creativity aspect behind creating my shadow box was time consuming, the overall result greatly resembled my inspirations work. They both share a similar color scheme and intention to portray personal memories.

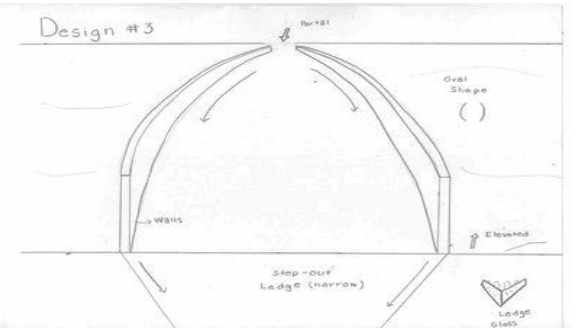
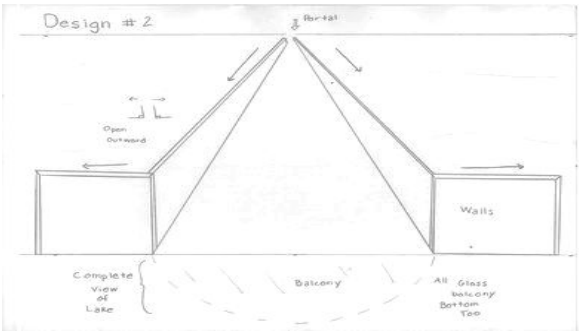
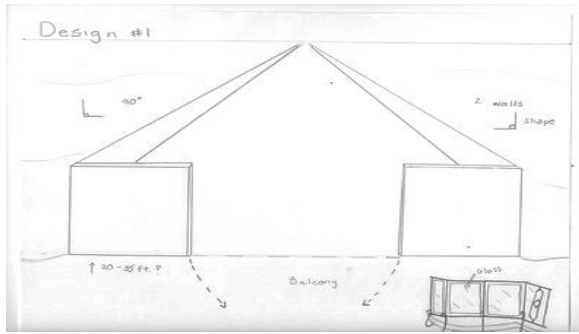
Reviewing and Reflecting Process



When I began to create my mixed media shadow box I started to work with painting the boxes. I had four boxes which were all meant to look like one; each box containing a different story. The top box displayed the city and community I lived in, the bottom left box displayed my childhood experience, and the third box my future plans and ambitions. The first step in putting these boxes together was to paint them one color that would display a similar color scheme. Painting the wooden boxes white took the most time as it was difficult for the white paint to stay or become fully visible on the boxes. After painting the boxes I began to explore ways in which I could place my items in the box. I experimented with the use of color, placement, and space. The experimentation of space was a difficult element as I wanted the boxes to look detailed but not over crowded.



Inspiration & Developing Ideas



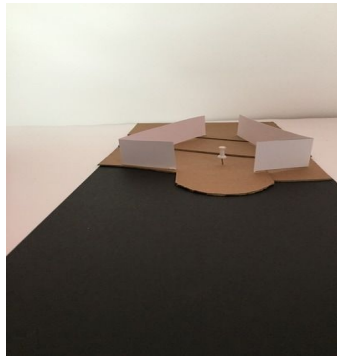
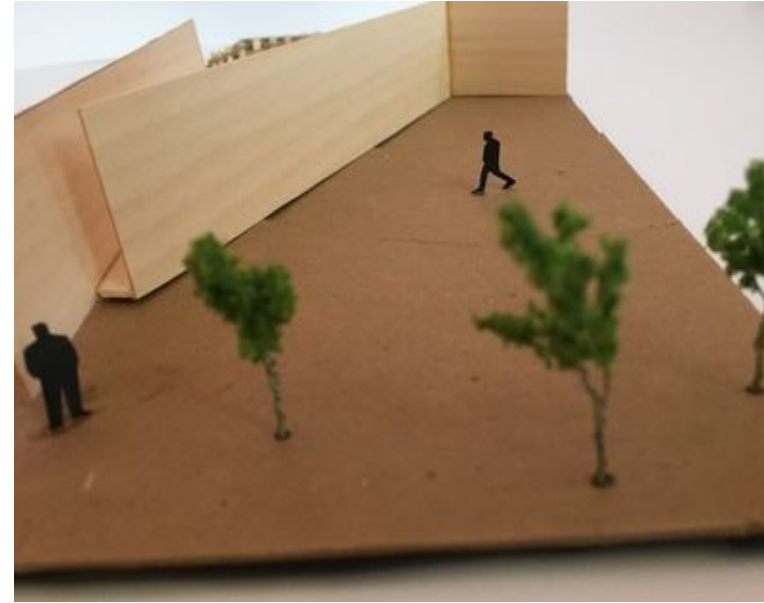
"Snake" (1997)
by Richard Serra
400cm x 1,585 cm, 5 cm thick

My architectural piece will begin by investigating the work of architect Richard Serra. The work of Richard Serra was often controversial but I liked the enclosed and unsettling feeling it evoked. Looking at his use of space inspired me to create a similar feeling of a towering enclosure balanced by a beautiful view. His use of enclosure was effective and explored audience interaction. Serra created structures in which his worked engaged kind of conversation of controversy.⁵ Once I recognized who my inspiration would be I also went to Lake Michigan in order to get a good perspective and experiment on of what I wanted my audience to feel. At the lake I began to create blueprint sketches and began to use my imagination to create space and balance between my structure, by manipulating the use of the walls. My piece will begin with a small tight place that gradually opens up into the water for the perfect view while considering a wide open balcony. My structure will embody meaning by making the viewer feel enclosed and with little space opening up to a bigger area. This is meant to give the viewer the experience of relief and freedom which will be felt if they were able to walk through my structure.

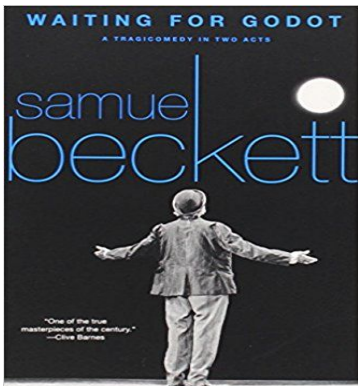
⁵Richard Serra Biography, Art, and Analysis of Works." *The Art Story*. N.p., n.d. Web. 26 Mar. 2017.

Range of Processes

After creating my planning sketches I chose a design that had a clear connection to Richard Serra's work. My work was not only supposed to convey Serra's towering enclosure but also embrace the beauty of the lake. Therefore I chose the design that allowed for the most beautiful view of the water. This was the second design I had planned, where the structure began with a narrow entrance and gradually opened up the farther you walked towards the lake. To begin this piece I created the base of the lack which consisted of some cardboard to represent the sand and black construction paper to represent the water. Then I cut out the base and the walls of the structure and glued them together. This was one of the most difficult things to do because I had to follow my scale ($\frac{1}{8}$ in. = 1ft.). Although it would have been much easier to have no real life scale, and base my structure of purely measurements and looks; the architectural real life process would have been insignificant. After creating the base and the walls, I felt my piece lacked detail and creativity. I then began to think of this being a real life structure at the lake, and as a person walking down the lake, what would make this work more engaging or pleasing to walk through and enjoy. That is when I began to create a elevated balcony and finish the piece with the addition of trees and people, which would make my piece look like a well developed and fully thought out blueprint. Overall, the process of making this piece was difficult and although it would have looked better as a bigger piece, the outcome appeared to be just as I had intended. This piece also encouraged me to think about the perspective of the audience and their enjoyment, opening my eyes to appreciating real world architecture which is often overlooked in the real world.

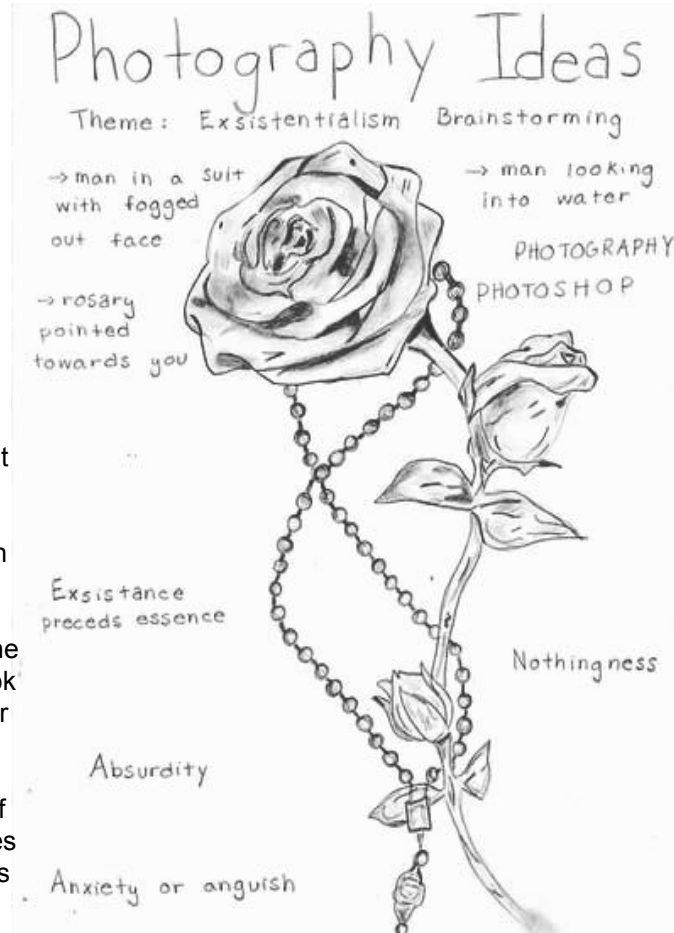


The pictures to the left show my initial thoughts and experimentations with the design of this piece. I began to manipulate the way I used space, symmetry, and the view of the lake. I felt that making a sketch on paper was not enough because it lacks the real world perspective of a design on all sides, and by making a three dimensional plan I was able to have a better view on how to effectively use the space provided.



Digital Image Ideas and Inspiration

Samuel Beckett was one of the inspirations for my work. His play "Waiting for Godot" is a play we analysed in Literature class which inspired the main topic of existentialism across all of my artwork. This play focuses on the questions we may have on life and what we are destined to do, in other words, what is the purpose for living and what do we do to obtain that purpose.⁶ Literature is another form of art that questions our understanding of things we overlook in our daily lives. This led me to think of "The Son of Man" by Rene Magritte. Magritte's piece displays a detailed man with a hidden identity. With this piece he worked towards encouraging the audience to not look for the mystery in his piece as it is already part of our everyday lives. This encouraged the ideas for my piece as I intended the audience to feel confused or frustrated by a image with a loss of identity. A lack of identity, however, makes up a part of everyone's lives as we begin to question why we are here and what is the purpose behind things we do in our everyday lives.



"The Son of Man" is a piece that Magritte emphasizes the idea that we often show a significant interest on what we can not see rather than focusing on what we can control.⁷ Although Magritte's piece is a painting I thought it would be best to represent my ideas through a photograph. Photography has always been a interesting way of capturing ideas in the moment, and since most of my art lacks the use of this skill I thought I would attempt to create a photography piece. Since my piece worked to convey purpose and its influences my first thought was to connect to the idea of religion. Religion is a large factor in many people's lives, including my own and it can guide many people towards finding their true identity. Religion or the lack of was an idea I will consider through the development of my work.

"Son of Man"
(1964)
by Rene Magritte
Oil on Canvas
116 cm x 89cm



⁶Beckett, Samuel. *Waiting for Godot*. New York: Grove Press, 1954.

⁷Rene Magritte. *Biography, Art, and Analysis of Works*. (n.d.). Retrieved August 23, 2017, from <http://www.theartsory.org/artist-magritte-rene.htm>

Experimenting with Photography



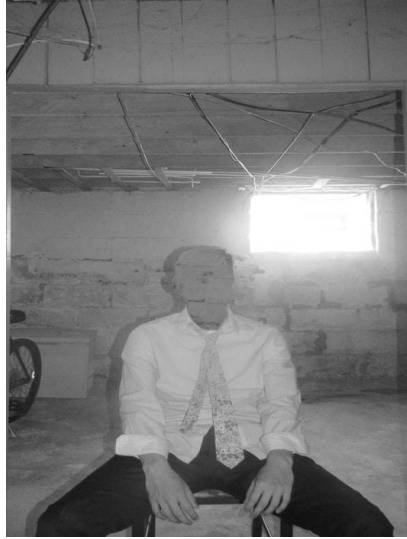
After looking back at my images I thought they lacked the skills behind photography. These photographs were not planned and lacked a clear connection to my inspiration. I decided that these would not be the photographs I would use because they could be more effective. I would then try taking another photograph and plan out a photograph that had a better connection to my inspiration without being as simplistic.

I began some planning sketches that would have a connection to both "The Son of Man" and "Waiting for Godot". I thought of using similar suits that the characters in "Waiting for Godot" and "Son of Man" wore, to make the connection clear. Then by replacing the head of the figure it would create a similar mystery and loss of purpose or void in life that my inspirations worked to display.

While beginning this photography piece I went out into my neighborhood and took multiple pictures. At first I took random pictures of things I thought were beautiful but then I realized that I was ignoring the purpose of my image. The goal was not to take pictures that were beautiful but pictures that conveyed a certain loneliness or mystery. I thought the following photographs displayed somewhat of a mystery or loneliness to them, although the color was in need of manipulation. Once altering the color of these photographs there was a clear solitude they expressed. Manipulating the color did not require a lot of work but the result effectively displayed some of my solitary intentions with the piece.

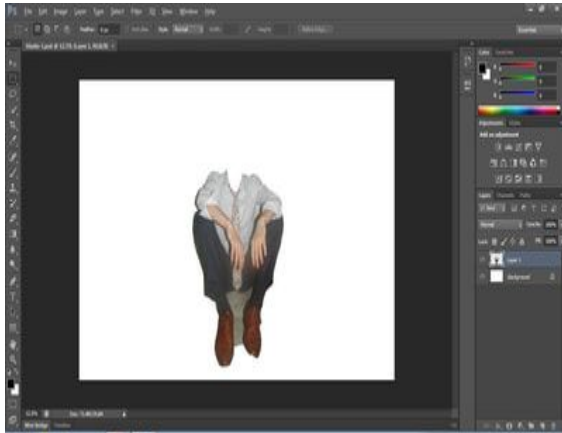


Further Experimentation and Process



My initial idea for this image involved using religion in the form of a photograph. Many times religion brings reassurance that we in fact do exist and have a purpose. The images below are photographs I took that had a connection to religion. The overall look of the images was good, but the interpretation of the piece was less effective when connecting it to "The Son of Man". Not only did it lack the visual resemblance but most importantly it lacked the mystery that Magritte's piece communicated. These photographs appeared to be displaying the need or wish from religion, which was shifting away from my intention. These photographs were originally meant to be my final piece but my intentions were not strongly effective, therefore, I decided to make one last attempt to the creation of this photograph.

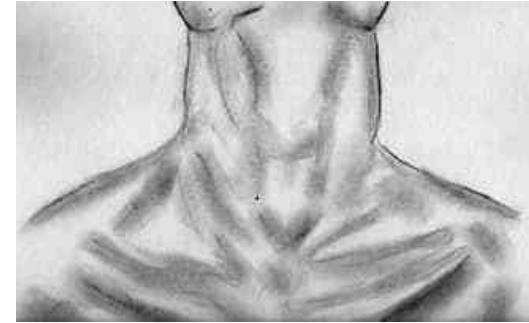
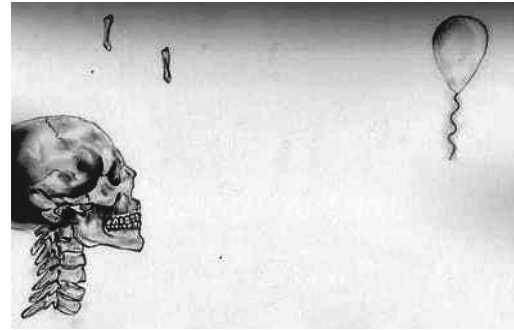
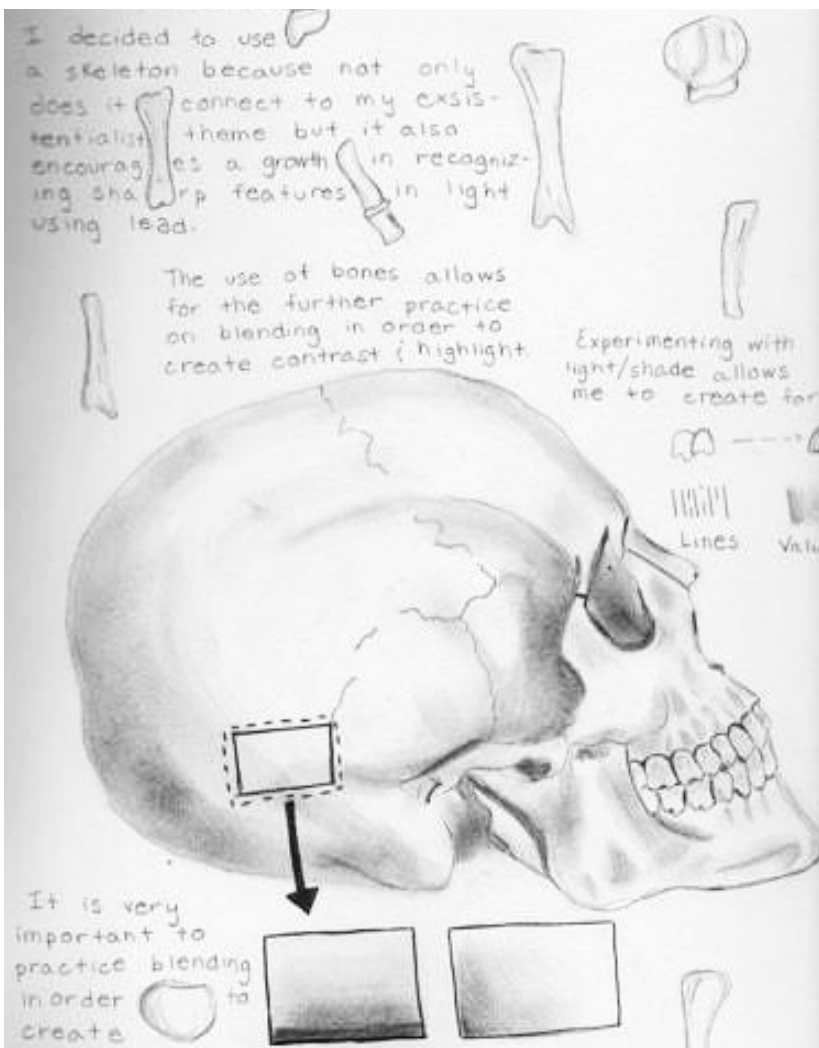
Also in order to add creativity to my piece I decided to possibly further manipulate my piece through the use of photoshop. Although, I find it more challenging it would allow for a stronger manipulation of my ideas.



The first step in creating my piece was taking the initial images. Then I went into photoshop to change the image, doing so by removing the face of the person. Finding a way to remove the face was incredibly challenging. I thought that it would be best to cut out part of the figure I wanted to keep, and paste it on to a blank page. Then while doing some research of the photoshop program I discovered that I could use the cloning tool to replace part of my image. This was much easier and effective in showing my image and manipulating space and form.



Planning Stages & Development

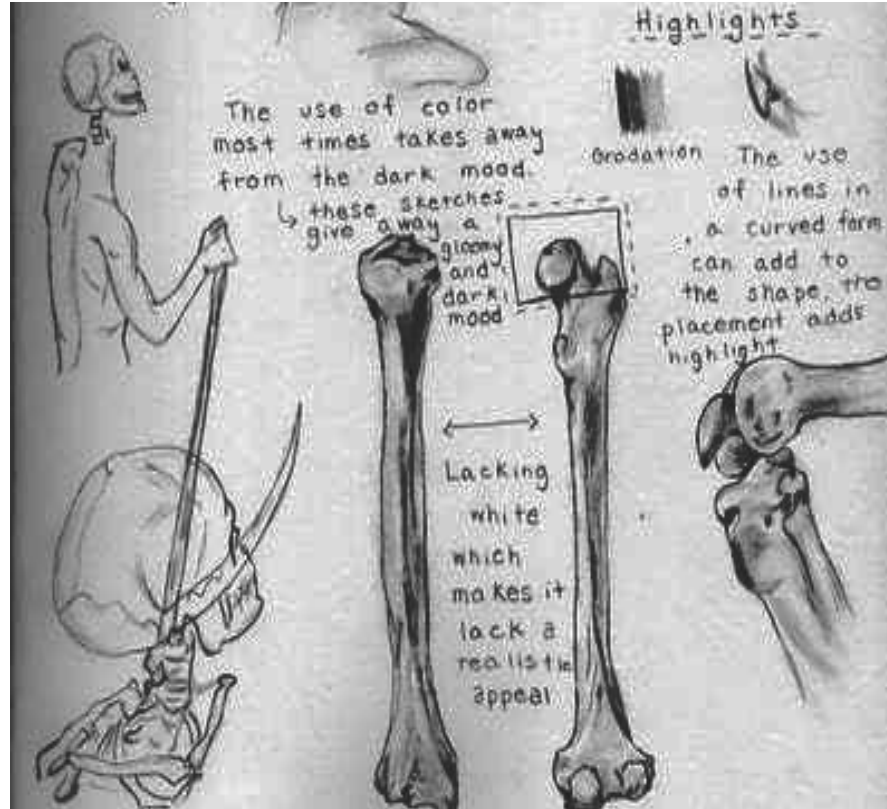


With this drawing I wanted to represent the agony of repetition in our daily lives. I noticed how repetitive our lives can be, and how miserable that can make one feel. With the above sketches I wanted to portray this concept. The use of a skeleton would allow me to portray the idea that repetition kills our thoughts or at least our positive thoughts. The balloon works towards representing our future hopes; what keeps us going. The other sketch shows a person looking up. By looking up it shows this stressful pose and the similar idea of searching for hope towards a happier future. I decided I would work with pencil for this piece and in order to do so I thought it would be necessary to repeatedly draw objects that require the use of smooth gradations. Therefore I drew skeletons and bones, but also doing so to figure out what pose I wanted my figure to hold. I was unsure if I wanted my figure to display human qualities. After creating my sketches I noticed it would be necessary to do so. By combining human qualities with it becomes clear that these are common thoughts amongst us. I considered using repetition as well which would work towards creating and emphasis, but I was unsure if it would be needed or if it would just work as a distraction from the piece.

Process and Experimenting with Form

"Day Dreaming" would be done with pencil, which requires effective blending techniques for the creation of value and form. Before actually starting my piece I began to use different techniques to create highlight and form. I found it most effective to use pressure when wanting to create darker tones. The transition of pressure is what allowed me to add darker tones and particular highlights.

I chose to use pencil for this piece because it is a medium that allows for great detail. Pencil is easier for me to create realistic form in, which is what I intended to do. I also wanted to create a large piece that would lack color, and pencil would allow for the creation of these elements and skills. I began by creating an outline sketch of my figure on my construction paper. This would allow for a better proportion of the figure. Then I began to fill in the skull and the body, followed by the chair. I found it difficult as I was creating form to not create smears on my piece while working on it. Overall, the piece was successful in the blending skills I applied. By practicing ways in which to most successfully blend, for example by using pressure, my finger, or water; the most effective results came from the use of applying pressure. After creating this piece I was able to develop better skills for the creation of form and value which allowed me to display a more realistic figure. However, in some areas it appears that I used too much pressure with the pencil making the transition of value look rough in texture, particularly seen in the top of the chair.



Planning Stages and Ideas

With this piece I am planning on creating a painting which reflects upon a happy memory. When thinking of happy memories I usually associate these memories to summer and the beach. Most of my summers consist of spending time at the lake and with my family. Since these are bright and happy memories I will be using acrylic paint. With acrylic paint, colors can be quickly adjusted into brighter and vibrant tones. When thinking of what exactly to paint, I drew ideas from summer photographs at the beach. I came across an image that was full of color and family memories which led to the following sketch.



I usually struggle with creating form with paint. There are multiple struggles I face while painting with acrylics. Acrylic paint dries quickly and can at times be difficult to blend colors together. Although I have a difficult time with acrylics, I want to expand my painting skills and techniques. Knowing that I struggle with the creation of form when using paint, I decided to practice painting different color spheres. Spheres require a smooth transition of color and certain highlights, which helps them look three dimensional. The spheres above show that I had good gradation of color but struggle with the creation of form. However, this will allow me to develop better skills as an artist and learn how to most effectively place highlights and darker tones in figures.

Work in Progress & Reflection

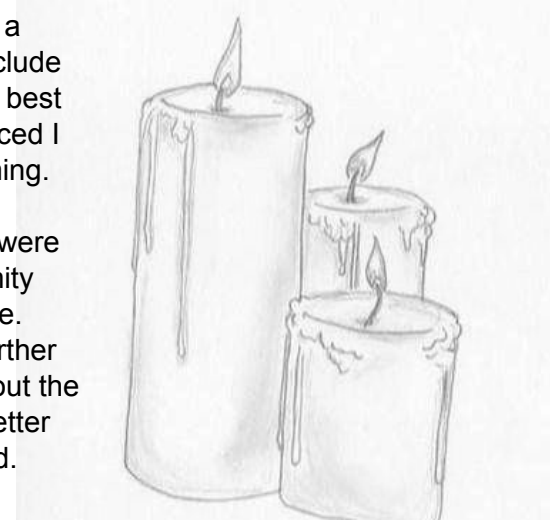
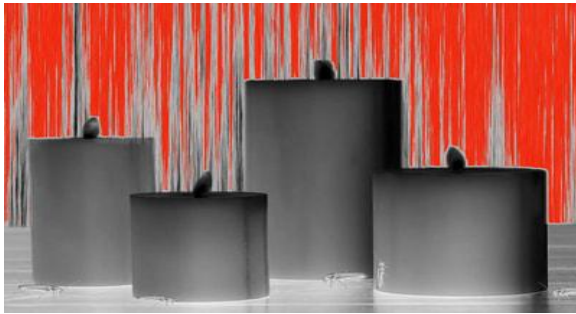
This painting “What a Day” began with a photograph I took in the summer while spending time with family. The central idea was connecting to memories which bring joyful memories back into our lives. In order to create this piece I first transferred an outline of the image into my canvas. This was done to help with the proportion of the piece which was significantly helpful. Then I began to paint the sky and the water, I found it easier to paint things of similar color at the same time. The water in my painting should have been improved because the shade of blue I used was not accurate. After having done the water I moved on to painting the blanket and the boy, which was then followed by the sand. Overall, there was need for improvement when it came to the vibrancy of colors and the smooth texture. When looking closely at the piece the brushstrokes become dry and rough. I found it effective when I applied more paint to the piece rather than water however, this technique lacked because when working with detail it is harder to remove the paint. Although I recognize that working with acrylic is not a medium I am comfortable using and find challenging, it helps to grow as an artist if I keep attempting to develop my skills. The outcome of this piece did not turn out as I had planned. I had planned to use oil paint because it would be easier to blend since it dries slowly especially compared to acrylic paint. However, I did not have enough oil paint and had to use acrylic instead. I noticed while working that the paint was drying too fast for my pace and that is why I had trouble blending and had rough brushstrokes throughout the entire piece. I did successfully reflect upon a joyful and relaxing day.



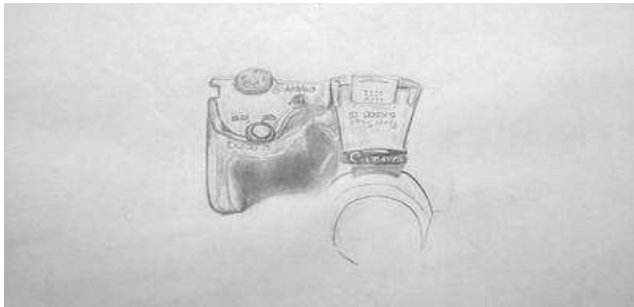
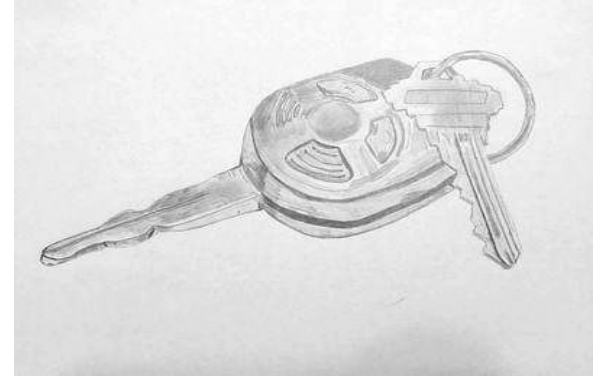
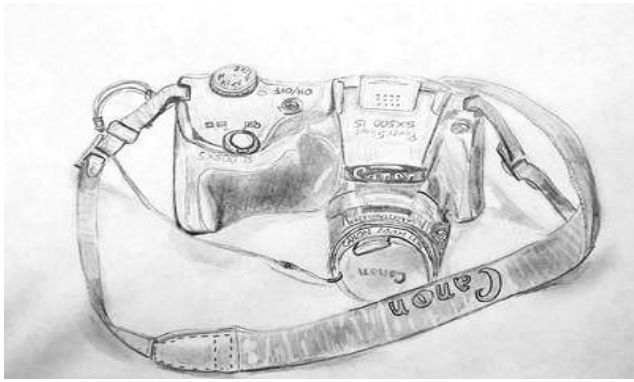
Experimenting with Photoshop

With this piece “It Burns” I desired to manipulate the reality of ordinary situations. My intention was to display an image that showed the unexpectedness of tragic events in our everyday lives. Tragic events and experiences are unwanted and viewed with disgust in a happy or ordinary day. At first I decided I would make this piece a digital image because it would be a clean way to manipulate color and objects. It is easier to work with at times because it gives me freedom to view things and immediately change them or delete my mistakes. When I began this piece in photoshop I was a bit skeptical about it because my photoshop skills are not well developed. I struggle with photoshop and making things appear uniform and real. I thought I would attempt displaying my ideas through a digital image because I would have an opportunity to expand my skills on photoshop. I pasted the objects in photoshop and began to arrange them into place. The more I cut and arranged objects the more I noticed how unrealistic they appeared. I had spent a large amount of time experimenting with the objects and the more I attempted to manipulate them into appearing real, the worst it got.

Looking at my images I decided it would be best to take a different approach with this piece. The next try would include using pencil to create my image. I thought this would be best because as I tried to enhance my photoshop skills I noticed I was getting incredibly frustrated and it was time consuming. Also, the cockroaches in the piece held a particular importance in displaying the feeling of disgust and they were hard to see. The color of these images and their uniformity did not appear to flow or create a clean connected image. The process of experimenting with photoshop helped further my skills as it pushed me towards researching more about the photoshop program. This also allowed me to create a better piece which appeared to look less random and scattered.

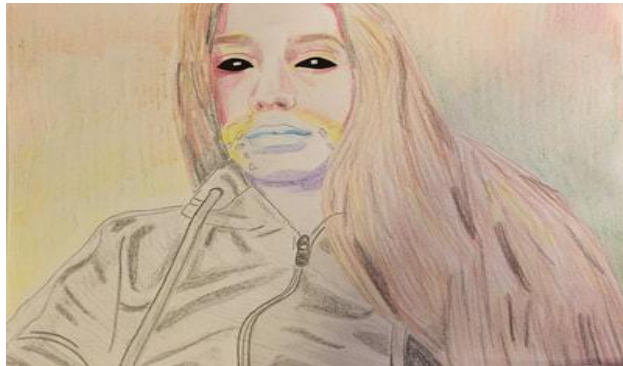
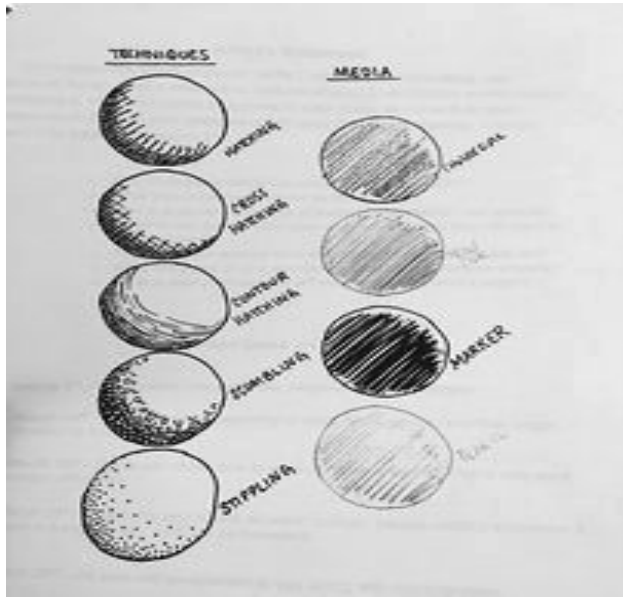


Experimenting with Still Life



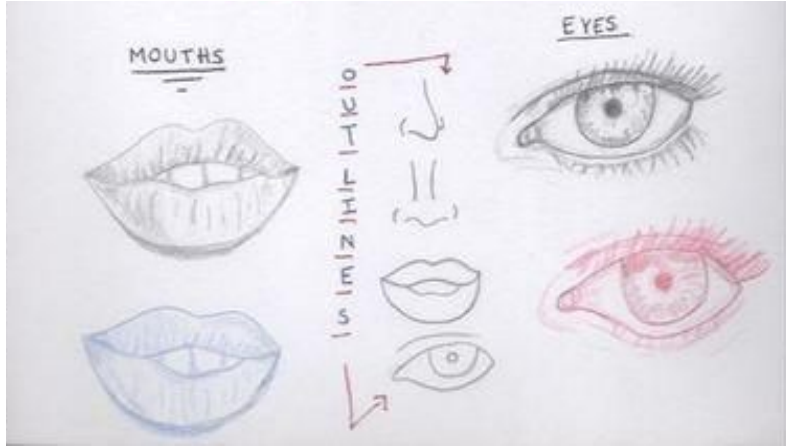
After experimenting with photoshop I decided I would use pencil instead. I thought pencil would be best to use because my piece would focus on the use of ordinary objects. Still life captures ordinary objects and their realistic aspect on paper. Therefore, I began experimenting with a couple of objects around my house. The results of each drawing were somewhat accurate and there was a smooth texture to them. Although I did enhance my drawing skills and did a lot of experimenting with still life, the use of pencil would not portray the my intentions effectively. I wanted to portray a disgusting quality with a rough texture; by doing so it would suggest tragedy and unwantedness or a struggle. In attempting to create my piece with another medium I would allow for my intentions to remain consistent. Although pencil does work towards showcasing a large amount of detail, the texture was not displaying the rough quality that would make my intentions stronger. When using pencil there is also a lack of color which can be critical in a piece, especially when attempting to connect a certain emotion or symbolic concept. Since my piece would revolve around unwantedness and uncommon feelings I decided I would use the color red as a way to connect to blood and emphasize on dread.

Initial Ideas & Techniques



Before beginning this my portrait “Serene” I knew I wanted to take a Fauvist and Surrealist approach. In order to have a connection to these art movements I would use vibrant colors and unrealistic textures. I also wanted my piece to be a portrait because I enjoy working with facial features and experimenting with their creation. These sketches were made in order to expand on my technique with creating form and value. I decided to make this sketches also serve to experiment with the creation of facial features. Also I began to think of what drawing techniques I would use. I knew that in order to connect to Favism it would require the use of unrealistic color. At first I experimented with color pencil with one of my sketches but then decided to try something different. Therefore, I would use color pencil, oil pastels, and paint to create a vibrant and bold colored piece that would work to develop strong technical skills, with a wide range of materials. I wanted this piece to represent the emotions we may experience every now and then which we often dismiss. Often emotions such as anger and sadness are feelings we are taught not to express in public. It has happened too often where these emotions get bottled up and cause harm to others around us. Many times there are people who are frustrated or sad and they hide it away with a smile or a serious face. I intended to show these ideas with the sketches to the right.

Experimenting & Refining Techniques



At first I decided to experiment with color pencil for my piece “Serene” because it was a medium I felt comfortable using. I began by drawing facial feature with pencil because it would help me identify where the highlight and dark tones needed to be place. Then I attempted to create the same facial feature with color pencil, which was not as difficult as I had thought it would be. After experimenting with creating facial features I decided to experiment with self portraits. My idea was to create multiple portraits with different mediums such as color pencil, pen, graphite, and oil pastels; then I would arrange them all together. I noticed that this was moving away from Fauvism but it allowed to further my ideas and improve my techniques with other mediums.

I realized that color pencil created the most realistic drawings and that I had developed a strong skill but it lacked in bright color. Bright colors were needed to enhance my intentions of displaying rage and anger and also in order to connect to Surrealist and Fauvist movements. That is what led to the choosing color pastels, acrylic paint, and color pencils as my mediums for this piece.

